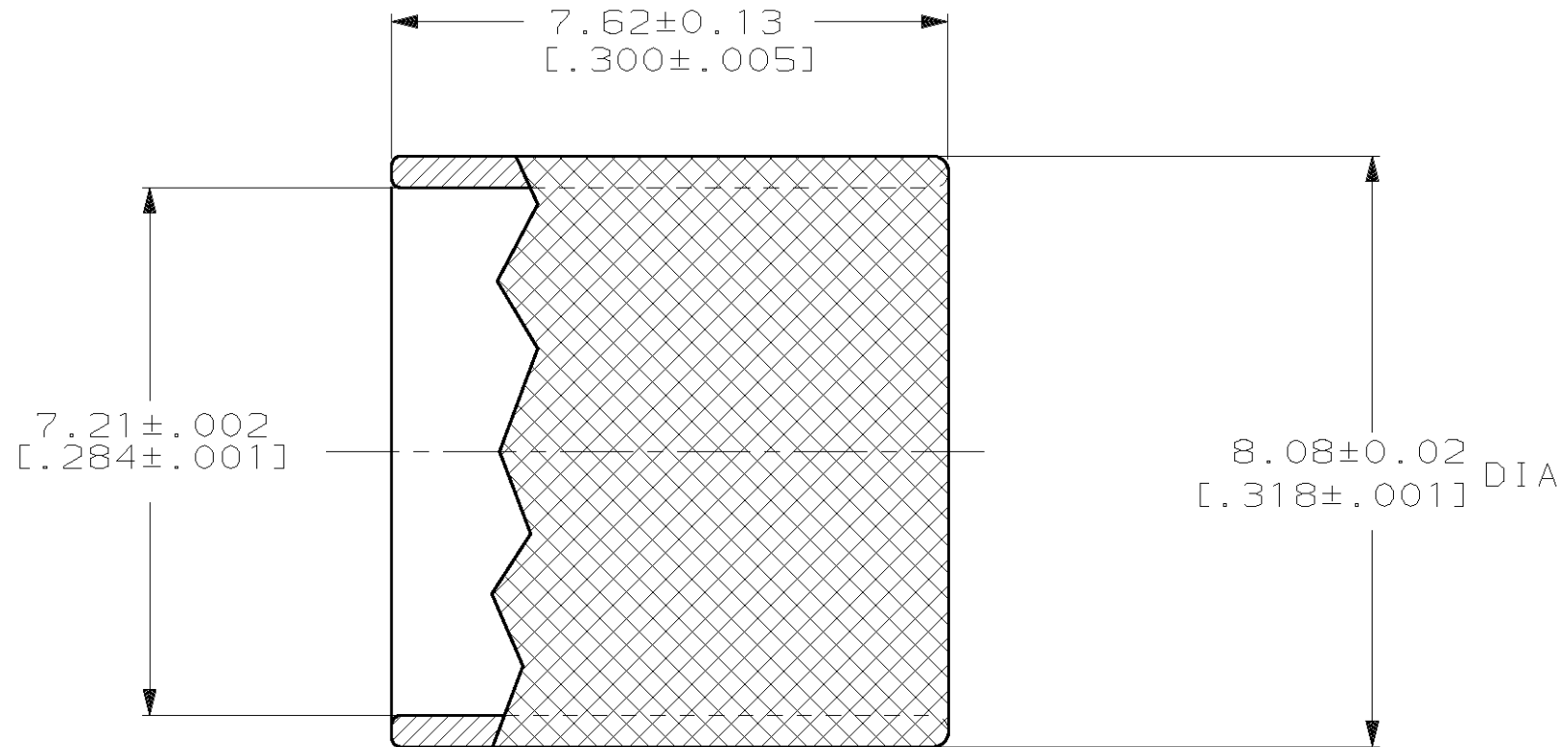
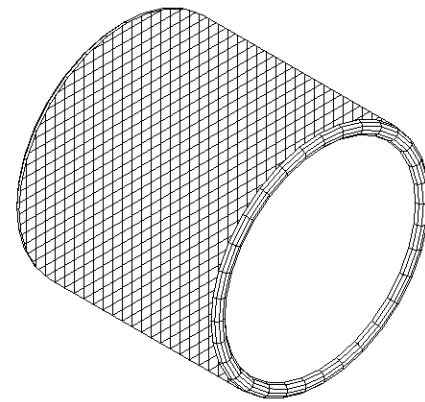


THIS DRAWING IS UNPUBLISHED. RELEASED FOR PUBLICATION ,19 .
 © COPYRIGHT 19 BY AMP INCORPORATED. ALL INTERNATIONAL RIGHTS RESERVED.

LOC	DIST	P	F	REVISIONS			
ZONE	LTR	DESCRIPTION	DATE	APPD			
CE	16			C	REVISE PER 0A00-0717-98	04DEC98	JPM/MB
				C	REVISE PER 0A00-0588-03	26MAR04	KG/SB



1 BULK PACKAGED, 100 PCS.

1 OBSOLETE
 501784-3
 501784-1
 PART NUMBER

DO NOT SCALE PRINT. UNLESS SPECIFIED DIMENSIONS IN mm TOLERANCES ON: 2 PLC DEC ± - 3 PLC DEC ± - ANGLES ± -		DR B.BRIGGS 8-10-89	AMP INCORPORATED Harrisburg, Pa. 17105
MATERIAL BRASS	CHK D.SONNER 8-10-89	APPD S.OWENS 8-10-89	
FINISH -	APPD S.OWENS 8-10-89	NAME CRIMP RING, INNER, FIXED SHROUD DUPLEX, OPTIMATE	
	PRODUCT SPEC -	SIZE B	FSCM NO 00779
	APPLICATION SPEC -	DRAWING NO 501784	
	WEIGHT -	SCALE 10:1	SHEET 1 OF 1